



Capability Statement

Metocean Baseline and Gap Analysis

Client: Impacto



REQUIREMENTS

To undertake a desktop environmental baseline study and gap analysis for an environmental impact assessment to undertake exploration in three blocks off central Mozambique

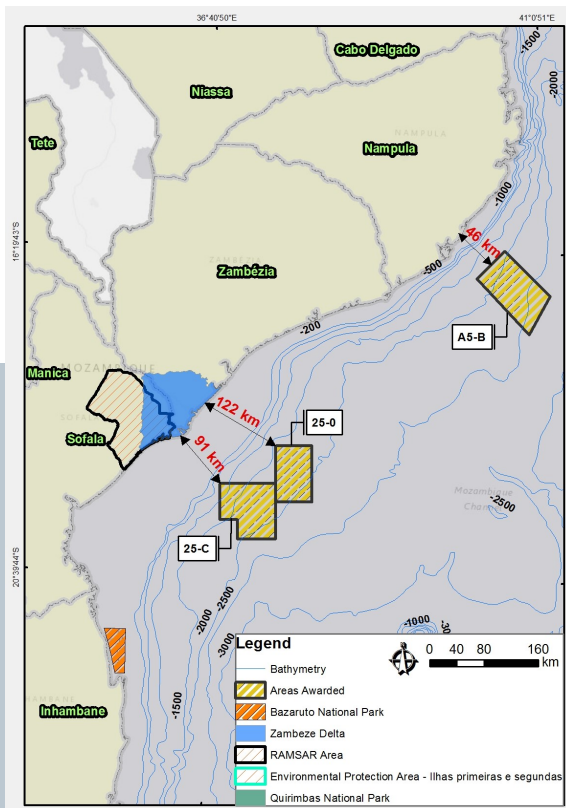
• Identifiable gaps in the metocean data that would be required to complete and environmental impact assessment for exploration related activities are identified and tabulated

WORK DONE

- Desktop review of available scientific literature, research reports and semi-formal publications from the region.
- The assessment provides baseline information on climate and weather, sediments and bathymetry and physical oceanography in the central Mozambique region, as well as in the localized areas of the Angoche and Zambezi concession areas. Information on ambient underwater noise in the region is also provided.

OUTCOMES:

Lwandle produced a detailed baseline characterising the oceanographic environment as much as possible using available literature. A table identifying all the areas where there is a lack of literature was produced identifying where more research needs to be conducted to perform a fully informed environmental impact assessment.



“Metocean baseline and gap analysis for block exploration in Central Mozambique”